



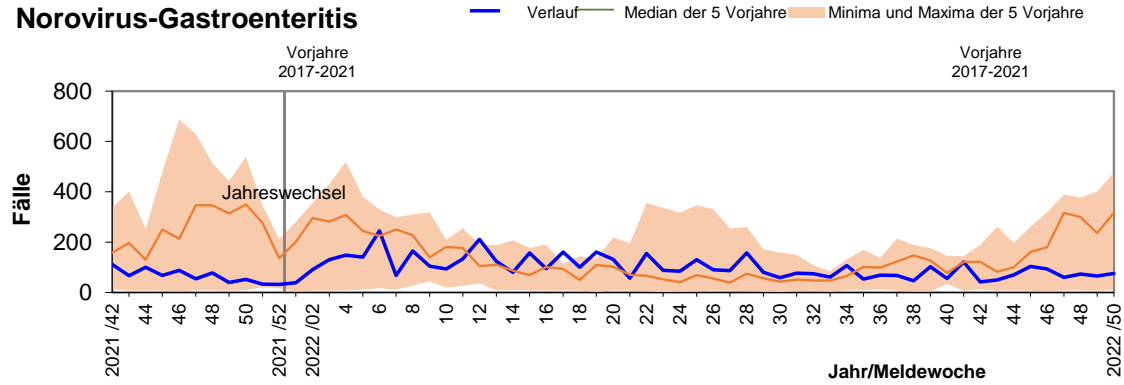
Meldung nach Infektionsschutzgesetz und Verordnung über die erweiterte Meldepflicht bei übertragbaren Krankheiten		50. Meldewoche 2022 (12.12.2022 bis 18.12.2022)					
		Meldewoche		jeweils 1. - 50. Meldewoche			
		50/2022		2022		2021	
		Anzahl	Inzidenz	Anzahl	Inzidenz	Anzahl	Inzidenz
Gastrointestinale Erkrankungen	<a href="#">Campylobacter</a>	14	0,65	1237	57,02	1444	66,57
	<a href="#">EHEC/STEC</a>	1	0,05	70	3,23	87	4,01
	<a href="#">Giardiasis</a>	2	0,09	80	3,69	46	2,12
	<a href="#">HUS</a>			5	0,23	1	0,05
	<a href="#">Kryptosporidiose</a>	1	0,05	91	4,19	80	3,69
	<a href="#">Norovirus</a>	76	3,50	5038	232,25	5560	256,31
	<a href="#">Rotavirus</a>	11	0,51	1110	51,17	220	10,14
	<a href="#">Salmonellose</a>	4	0,18	410	18,90	307	14,15
	<a href="#">Shigellose</a>			4	0,18	1	0,05
	<a href="#">Yersiniose</a>	5	0,23	124	5,72	140	6,45
Virushepatitis	<a href="#">Hepatitis A</a>	1	0,05	27	1,24	21	0,97
	<a href="#">Hepatitis B</a>	7	0,32	240	11,06	75	3,46
	<a href="#">Hepatitis C</a>	4	0,18	140	6,45	56	2,58
	<a href="#">Hepatitis D</a>			4	0,18		
	<a href="#">Hepatitis E</a>	6	0,28	393	18,12	349	16,09
Meningitis, invasive	<a href="#">Meningokokken</a>			2	0,09	4	0,18
	<a href="#">Pneumokokken</a>	9	0,41	103	4,75	60	2,77
	<a href="#">Virusmeningitis</a>			3	0,14	4	0,18
Impfpräventable Krankheiten	<a href="#">Affenpocken</a>			14	0,65		
	<a href="#">Haemophilus influenzae</a>	2	0,09	23	1,06	15	0,69
	<a href="#">Influenza</a>	3813	175,77	14411	664,33	62	2,86
	<a href="#">Keuchhusten</a>	23	1,06	182	8,39	85	3,92
	<a href="#">Masern</a>						
	<a href="#">Mumps</a>			9	0,41		
	<a href="#">Röteln, postnatal</a>						
	<a href="#">Windpocken</a>	5	0,23	342	15,77	294	13,55
Weitere Erkrankungen	<a href="#">Acinetobacter*</a>			14	0,65	6	0,28
	<a href="#">Brucellose</a>			1	0,05		
	<a href="#">Chikungunya</a>						
	<a href="#">CJK</a>			3	0,14	3	0,14
	<a href="#">Clostridioides difficile</a>			86	3,96	105	4,84
	<a href="#">COVID-19</a>	5.546	255,7	722.458	33.304,5	178.766	8.240,9
	<a href="#">Denguefieber</a>			2	0,09		
	<a href="#">Enterobacteriaceae*</a>	5	0,23	126	5,81	108	4,98
	<a href="#">FSME</a>			4	0,18	4	0,18
	<a href="#">Hantavirus</a>					3	0,14
	<a href="#">Keratokonjunktivitis epidemica (KCE)</a>	4	0,18	34	1,57	53	2,44
	<a href="#">Legionellose</a>			31	1,43	25	1,15
	<a href="#">Leptospirose</a>			2	0,09		
	<a href="#">Listeriose</a>			18	0,83	16	0,74
	<a href="#">Lyme-Borreliose</a>	3	0,14	638	29,41	659	30,38
	<a href="#">MRSA</a>			52	2,40	45	2,07
	<a href="#">Ornithose</a>						
	<a href="#">Paratyphus</a>						
	<a href="#">Q-Fieber</a>					1	0,05
	<a href="#">Scharlach</a>	36	1,66	421	19,41	197	9,08
	<a href="#">Tuberkulose</a>	2	0,09	93	4,29	72	3,32
	<a href="#">Tularämie</a>			4	0,18	8	0,37
	<a href="#">Typhus</a>			1	0,05		
<a href="#">West-Nil-Virus</a>	1	0,05	6	0,28	1	0,05	
	<a href="#">Zikavirus</a>						

\*mit Carbapenemresistenz

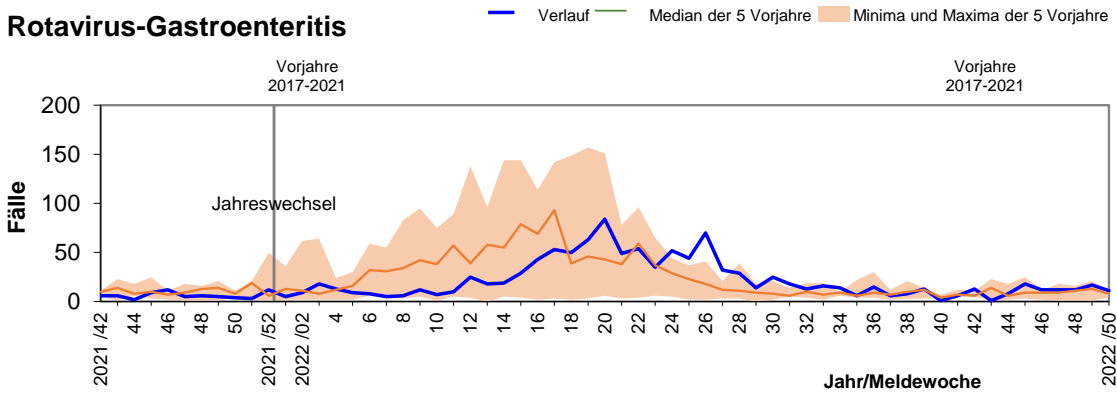
### Fallzahlen in den letzten 60 Kalenderwochen in Sachsen-Anhalt

#### Gastrointestinale Erkrankungen

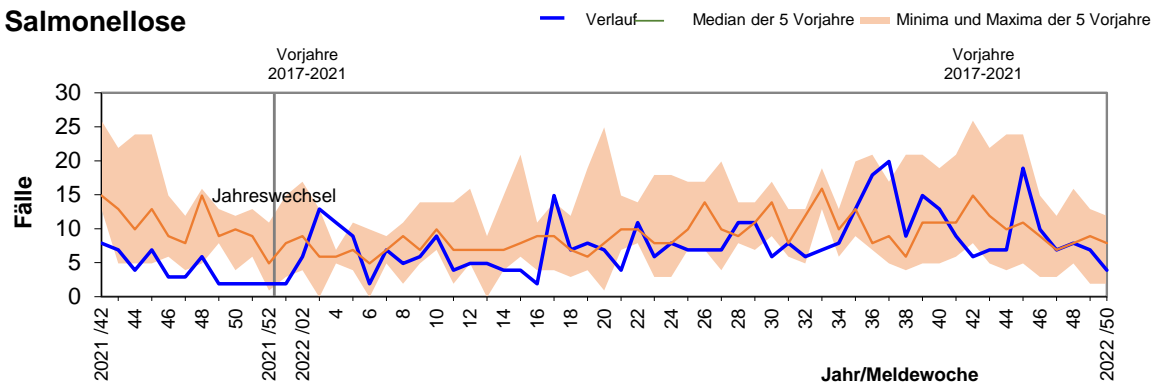
##### Norovirus-Gastroenteritis



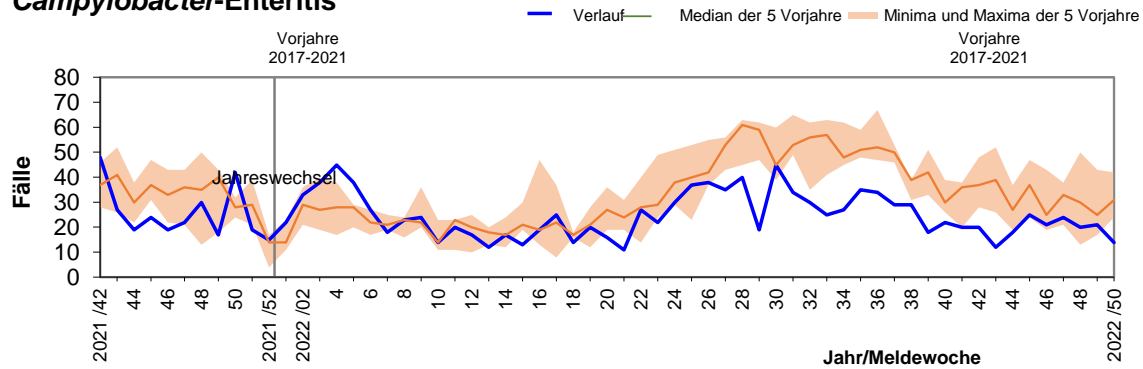
##### Rotavirus-Gastroenteritis



##### Salmonellose

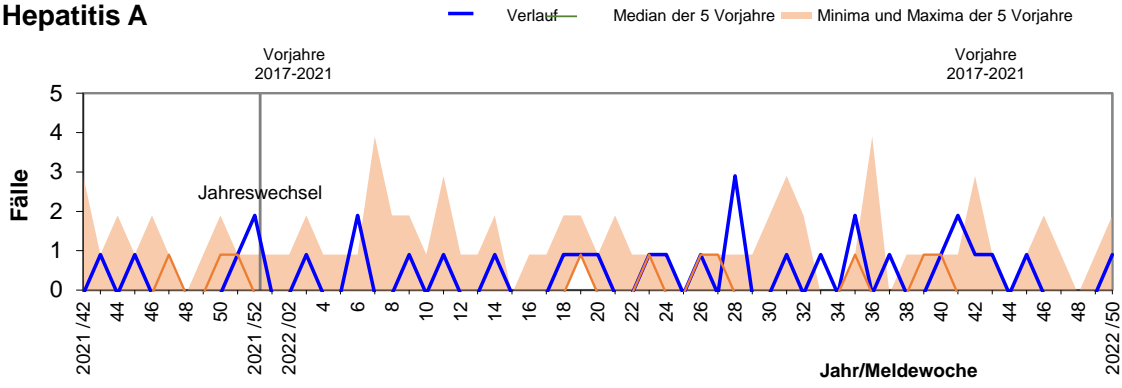


##### Campylobacter-Enteritis

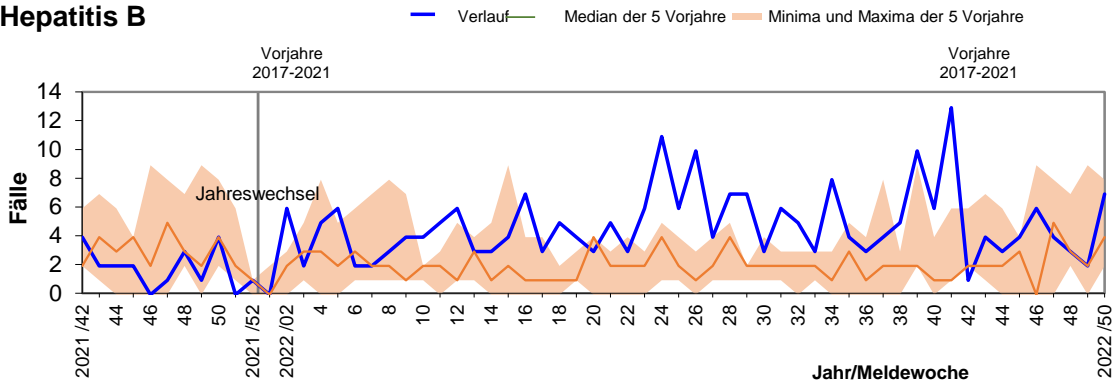


# Hepatitis

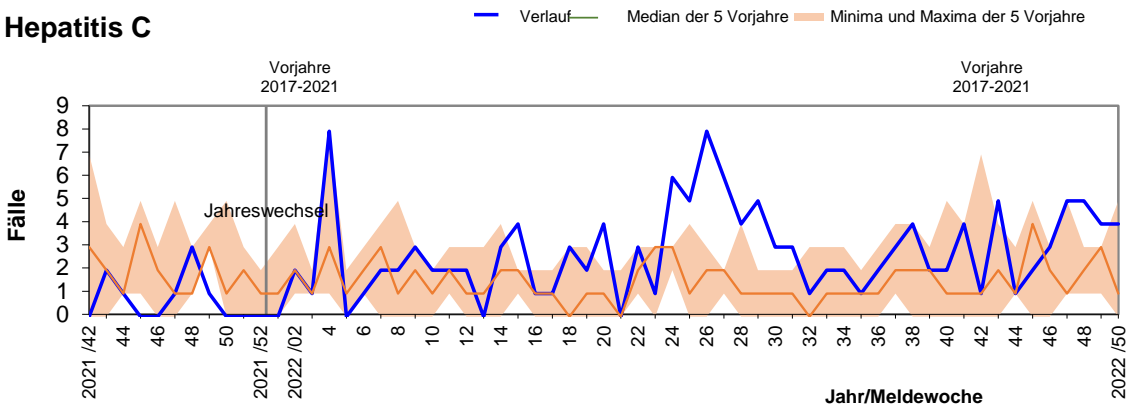
## Hepatitis A



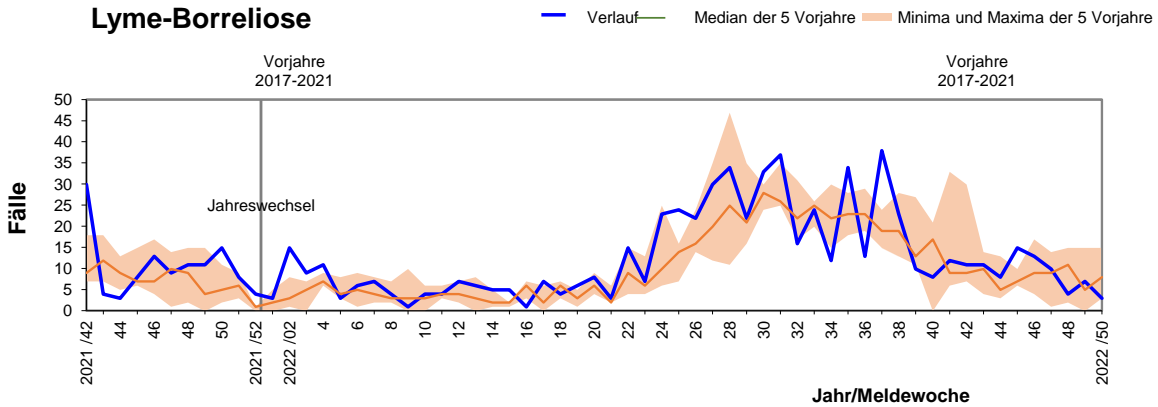
## Hepatitis B



## Hepatitis C

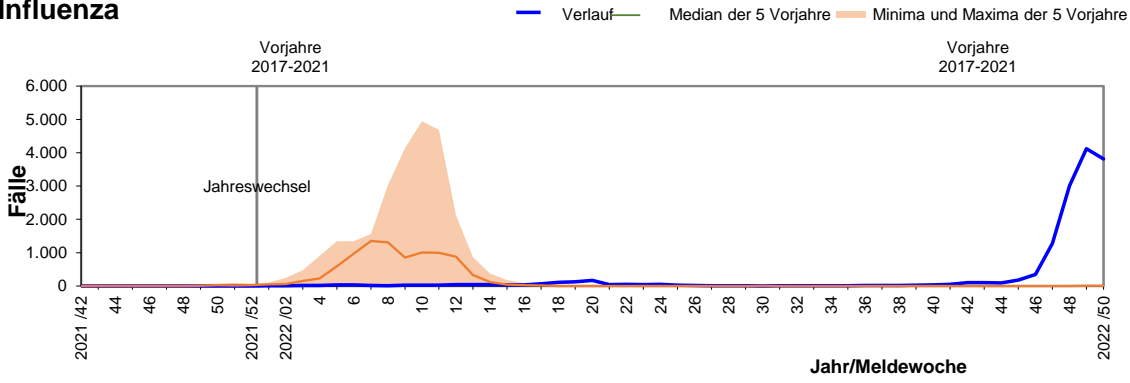


## Lyme-Borreliose

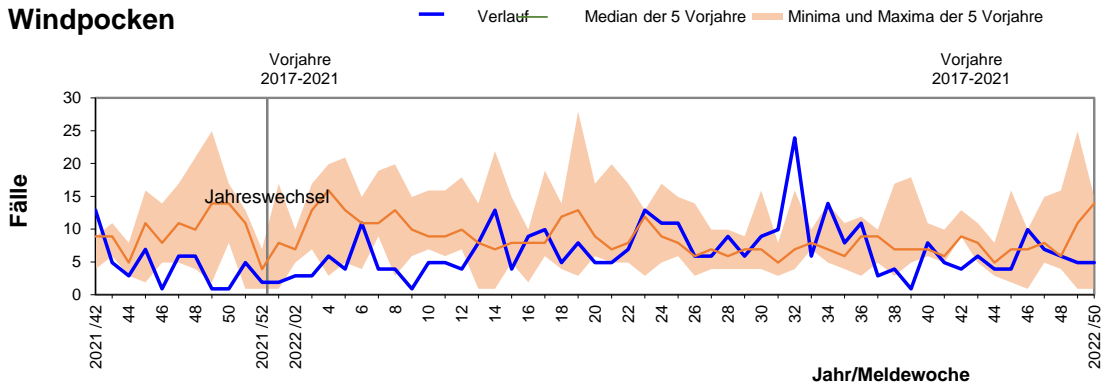


# Impfpräventable Krankheiten und weitere Krankheiten

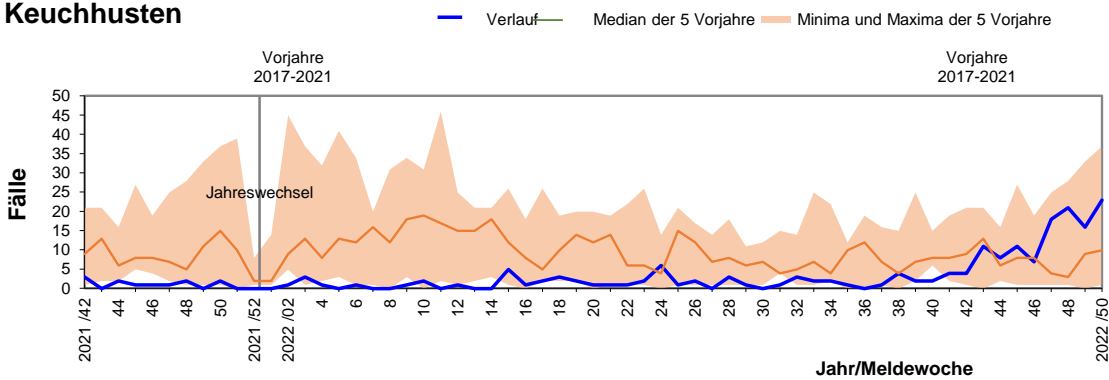
## Influenza



## Windpocken



## Keuchhusten



## Tuberkulose

